

BIGTIME

<http://www.bigtime.com.tw>



BT-4501 Driving Lamp

220mm diameter driving lamp

Housing:

Reflector: Polycarbonate

Lens: Polycarbonate

LED: 2 x 10W High Power XML Cree LED's
(Driving Light)

16 x 1W Cree LED's
(Position Light)

Bracket: Aluminum die-cast

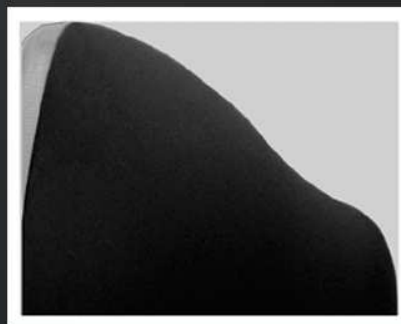
ECE & SAE Approved

Life's of LED is over 50,000 hours

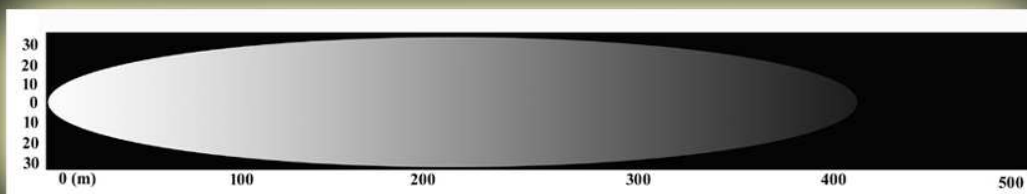
Waterproof and fully seal with IP68



Position light with optical lens design to produce a homogeneous light spread from the lens



Housing with smooth texture and unique design curvature



The light is producing a focus, pencil shape bright light to penetrate the light on the road.